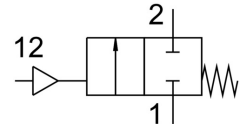
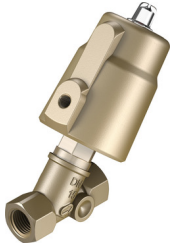


# Angle seat valve VZXF-L-M22C-M-B-G12-120-H3B1V-50-16-C

FESTO

Part number: 3539036



## Data sheet

Feature	Value
Type code	VZXF
Structural design	Poppet valve with piston actuator
Actuation type	Pneumatic
Sealing principle	Soft
Mounting position	Any
Type of mounting	Line installation
Cable connection	Threaded sleeve G1/2 as per DIN ISO 228
Nominal width	12 mm
Valve function	2/2, closed, monostable
Flow direction	Non-reversible
Medium pressure	0 bar ... 16 bar
Nominal pressure of fitting PN	16
Exhaust air function	Without flow control option
Reset method	Mechanical spring
Type of control	Externally controlled
Pneumatic connection	Internal thread G1/8
Operating pressure	6 bar ... 10 bar
Symbol	00991367
Medium	Vapor Hydraulic fluid based on mineral oil Inert gas Mineral oil Water Filtered compressed air, 200 µm filter mesh Neutral liquids
Flow direction	Under valve seat, for gaseous and liquid media
Operating medium	Compressed air as per ISO 8573-1:2010 [7:4:4]
Max. viscosity	600 mm <sup>2</sup> /s
Temperature of medium	-10 °C ... 80 °C
Ambient temperature	-10 °C ... 60 °C
Flow rate Kv	3.7 m <sup>3</sup> /h
Note on materials	RoHS-compliant
Valve housing material	Red brass
Material number, fitting housing	CC499K
Spindle seal material	FPM
Seat seal material	FPM
Product weight	1200 g

Feature	Value
Corrosion resistance class (CRC)	1 - Low corrosion stress
Drive housing material	Brass